

# BROMLEY CONSERVATOIRE

## Facility Hire

Professional Spaces for Music, Education & Events

Discover our range of well-equipped rooms and facilities, perfect for lessons, workshops, performances, and regular activities.



# Music Room 1

*Cosy attic room with comfortable seating*

Our cosy attic music room features an upright piano, comfortable sofa, soft lighting, desk and chair. Perfect for focused practice sessions or intimate lessons. Fully heated for year-round comfort.



## Capacity

1-2 people



## Equipment

Upright piano, sofa, desk



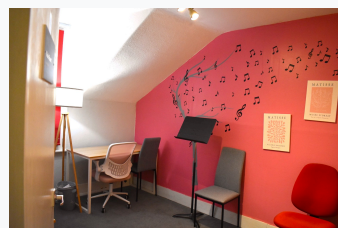
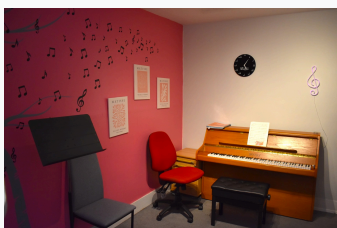
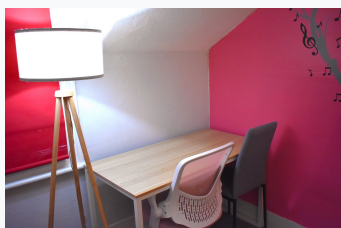
## Comfort

Fully heated



## Atmosphere

Soft lighting, cosy



**£12**

per hour (inc. VAT)



# Music Room 2

*Fully equipped multi-instrument room*

Our most versatile room featuring electric drum kit, upright piano, digital piano, amplifier, desk and chair. Sound absorption panels ensure excellent acoustics. Heated and perfect for diverse musical needs.



## Capacity

1-2 people



## Instruments

Drums, pianos, amp



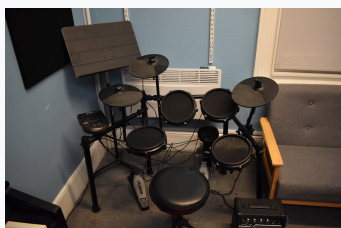
## Acoustics

Sound absorption panels



## Features

Most versatile room



**£12**

per hour (inc. VAT)



# Music Room 3

*Cosy basement practice room*

A cosy basement room providing a quiet, secluded space for focused practice. Features upright piano, table and chair. Excellent natural sound isolation and fully heated for comfort.



## Capacity

1-2 people



## Equipment

Upright piano, table



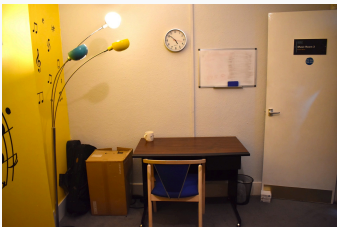
## Environment

Quiet, secluded



## Acoustics

Natural sound isolation



# £12

per hour (inc. VAT)



# Music Room 4

*Compact room with excellent acoustics*

A small, intimate room with excellent acoustics, ideal for focused practice. Features upright piano and is fully heated. Perfect for solo practice sessions or one-on-one lessons.



## Capacity

1-2 people



## Equipment

Upright piano



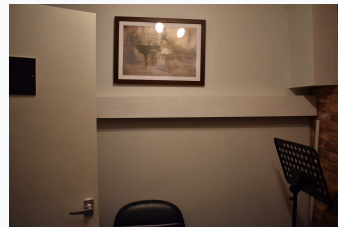
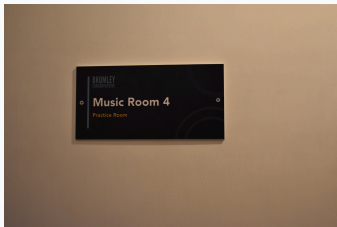
## Acoustics

Excellent quality



## Size

Compact & intimate



# £12

per hour (inc. VAT)



# Music Room 5

*Ground floor with easy access*

Conveniently located on the ground floor with easy access, making it ideal for accessibility needs. Features upright piano and is fully heated. Perfect for all abilities and mobility requirements.



## Capacity

1-2 people



## Equipment

Upright piano



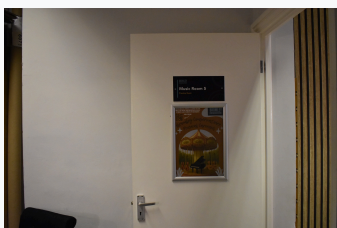
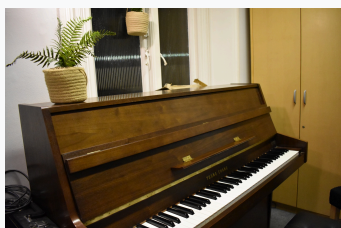
## Access

Ground floor, easy access



## Convenience

Near reception



# £12

per hour (inc. VAT)



# The Studio

*Versatile drama, exam and practice space*

A compact but highly versatile basement space used weekly for drama, acting and musical theatre. Features a small stage, height-adjustable smartboard with speakers, and excellent sound dampening. Perfect for music exams, practice sessions, and theatrical performances.



## Capacity

6-10 people



## Stage

Small performance stage



## Technology

Smartboard + speakers



## Acoustics

Sound dampening



**£25**

per hour (inc. VAT)



# The Lovelace Room

*Bright classroom with good views*

A bright, inspiring classroom with views over main East and South Streets in Bromley. Features a height-adjustable smartboard with speakers, 12 seats, one large central table and three satellite tables. Height-adjustable chairs ensure comfort for all ages.



## Capacity

12 seats



## Technology

Smartboard + speakers



## Furniture

Height-adjustable chairs



## View

Vast street views



**£28**

per hour (inc. VAT)



# Archimedes Attic

*Modern computer lab with full technology suite*

State-of-the-art computer room with 12 seats and 8 modern all-in-one PCs, each with headphones, stands, wireless keyboards and mice. Features height-adjustable smartboard with speakers, modern height-adjustable tables and chairs.



## Capacity

8-12 seats



## Computers

8 all-in-one PCs



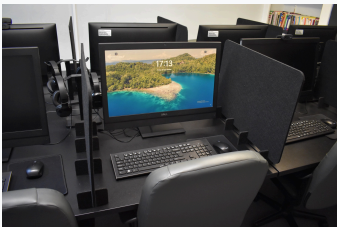
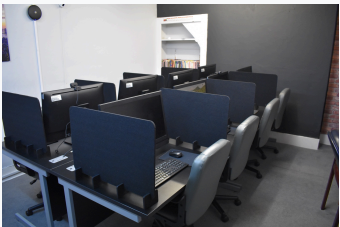
## Accessories

Headphones, wireless



## Display

Smartboard + speakers



# £35

per hour (inc. VAT)



# Whole-Centre Hire

*Complete building access for events*

Hire our entire building featuring a large reception area with kids' reading zone and festive decorations, two gender-neutral toilets, staff toilet, kitchen, printer room, wayfinding signage throughout, and multiple fire escape doors with full fire alarm system.



## Access

Full building



## Perfect for

Events, day courses



## Facilities

Kitchen, toilets



## Safety

Fire alarm system



# £100

per hour (inc. VAT)

# Booking Information & Availability

## Regular Bookings Preferred

We primarily cater to regular clients and long-term partnerships. While ad-hoc bookings are permitted from time to time (especially during school holidays), we're looking for:

- ✓ Weekly activity providers
- ✓ Regular therapy sessions
- ✓ Consistent music practice
- ✓ Long-term classes & workshops

Regular bookings provide better value and help us maintain a stable schedule.

## Availability

**Weekdays:** Mornings until 2:00 PM

Monday through Friday

**Weekends:** Saturday & Sunday evenings

**School Holidays:** Extended hours with more flexibility

*For current term dates, visit:*

*[bromley-conservatoire.co.uk/info/term\\_dates](http://bromley-conservatoire.co.uk/info/term_dates)*

## What's Included

- ✓ Fully heated rooms year-round
- ✓ Access to common areas
- ✓ Kitchen facilities (whole-centre)
- ✓ Toilets and reception area
- ✓ Wayfinding signage
- ✓ Fire safety systems

## Pricing Summary

**Music Rooms (x5):** £12/hr

**The Studio:** £25/hr

**The Lovelace Room:** £28/hr

**Archimedes Attic:** £35/hr

**Whole-Centre Hire:** £100/hr

All prices include VAT

---

## Get in Touch

### Email:

[admin@bromley-conservatoire.co.uk](mailto:admin@bromley-conservatoire.co.uk)

### Website:

[bromley-conservatoire.co.uk](http://bromley-conservatoire.co.uk)